

WASHINGTON STATE BEEKEEPERS ASSOCIATION

Keep the Bee in Business

www.wasba.org

President's message

This is going to be a great beekeeping year. At the State board meeting February 19th there was enthusiasm floating in the air, you could feel it.

Plan to attend two WSBA events this year. The first is a WSU sponsored Field day June 24 and 25 in Pullman Washington. This should stack up to be very interesting with combinations of lab based education plus field exercises. What a nice way for WSU to help beekeepers with practical techniques. I learn something new every time I attend. It was at one of these events, years ago, that Steve Sheppard showed us gloveless beekeeping techniques that I've adhered to ever since. More information on the Field day agenda and registration will be sent out soon.

The other event I'm pumped about is this year's Fall Conference. The conference will be held October 27, 28 and 29 in Federal Way at the Best Western right off the freeway for easy access. We have a great line up of speakers and are discussing topics such as queen rearing, natural and urban beekeeping plus possible break out sessions on focused topics. For the hobbyist beekeeper this will be the must see event. Soon we'll send more information on how to reserve rooms and information on the great speaker line up.

I will visit many of you at local associations this year and I hope we can enjoy discussions on what WSBA does for you and what we have to look forward to.

Paul Lundy



Regional events to interest you

Bee Events

April 2011

Apiary Registration WSDA

Washington State Department of Agriculture Beekeeper/Broker Registrations are due

June 24, 25, 2011

WSU Field Day

Friday night will be wine and cheese and classes all day on the 25th.

June 25, 2011

Executive Board Meeting

This meeting will be held in conjunction with the WSU Field days

October 27, 28, 29, 2011

Washington State Annual Conference

Federal Way Best Western Sponsored by WSBA

November 17, 18, 19, 2011

Oregon State Annual Conference

Seaside Convention Center Sponsored by OSBA

Executive Board Meeting Minutes

April 19, 2011 Executive Board Meeting Minutes
Jim Bach, Secretary

9:00 am Committee Meetings – Exec. Bd. and Master Beekeepers:

*Exec. Bd. members discussed 2011 annual conference planning ideas. Treasurer Paul Hosticka will do the conference registrations. We need volunteers to handle the detail of the silent and audible auction during the conference.

Auctioneers: Mike Burgett, Steve Sheppard & Ramesh Sigili

*Need to get non-commercial (hobby) beekeepers to annual conference – focus of promotion effort. Promote in ABJ, Bee Culture and to local beekeeper associations

*Consider raising conference daily registration fee

*Ideas for conference agenda:

Tim Lawrence – bees for home gardeners

Paul Hosticka, Dan Harvey, John Gates – queen production for small beekeepers

George Hansen as American Beekeeping Federation representative, plus someone from American Honey Producers

Gloria Degrandi-Hoffman – USDA Tucson Bee Laboratory

Executive Board Minutes:

10:00 AM Call to order.

23 persons in attendance

Motion to accept the minutes of the previous meeting as published in the WSBA Newsletter – by Jim Bach, second by Jerry Tate. **Passed**

Treasurer Report -- Paul Hosticka:

Association assets - \$84,136

WSBA Profit & Loss 10/1/2010 through 2/15/2011: Income - \$34,314, Expenses - \$20,620, plus interest income - \$35 = Net profit - \$13,728

2010 Conference profit & loss: Income - \$32,351, Expenses - \$16,043, Net profit - \$16,308

Members: Dues paying = 53, Honorary = 5, Associate = 268, Dues received - \$268

President Paul Lundy: This year WSBA will focus on supporting local beekeeper association member interests.

Discussion:

*Find ways to distribute membership information to beekeepers

*We may have too many membership categories

Need to form Membership Committee: Cindy Smith, Shannon Bolling, & Lisa Knox appointed

Master Beekeepers Committee Report – Louis Matej: See WSBA newsletter.

WSU report – Steve Sheppard: June short course – would like ideas for specific topics.

- Journeyman and Master Beekeeper education,
- Research: Brandon Hopkins – develop germ plasm repository
- WSU queens: Discussing industry interest in program; Steve is open to ways to improve the program; He is in the process of defining the program to make it more than just handing out queens to interested beekeepers; design record keeping methods for feedback on queen quality, survival etc.
- June short course in Pullman – June 24-25, 2011: There is a need for a “graduate” course on how to evaluate colonies for use as queen and drone lines, how to test colonies – round table or panel discussion or have Sue Cobey make a presentation

Sue Cobey is starting a queen rearing seminar to be held on June 15 in Mt. Vernon, WA

Location and price unknown

*Jim Bach – Honey Identity Standards:

- A draft of the proposed standards was emailed to the WSBA Executive for comment – one received.
- He is waiting on WSDA to provide a list of honey processors in WA so he can mail them a copy of the draft for comment.
- Following development of a fourth draft, WSBA will be approached about adopting the draft for action by WSDA and placement into regulation.

Discussion about having WSBA representation and ABF and AHPA conferences

WSBA grant application cut-off date: Motion by Eric Olson to set Aug. 15 as that date, second by Lisa Knox, **passed**

Executive Board Meeting Minutes

Motion to combine WSBA and Master Beekeeper checking accounts: Moved by Bob Smith, second by David Pearson, **passed**

*2011 WSBA Conference discussion:

Eric Olson, John Timmons, Alisa Shorey working on conference to be held October 27 – 29, 2011

Program Suggestions:

- Speakers: Dave Tarpy, Gloria DeGrandi-Hoffman, WSU, OSU
- Subjects: Organic – natural beekeeping: Kirk Webster, Randy Oliver
- Other suggested speakers: Andony Melathopoulos, John Gates
- Urban beekeeping – Corky Luster suggests Michael Bush of North Dakota
- Candles, soap & bee crafts – Susan Hosticka, Corky Luster
- Small scale queen rearing – Paul Hosticka
- Pollen collecting, preparation, safety and marketing
- Small scale marketing of bee products
- Dr. Weeks, Whidbey Island – bee venom therapy
- American Honey Queen, Susan Hosticka will contact
- Could consider concurrent sessions at conference
- 30 minute presentation by Louis Matej regarding Bee Master Program

*Discussion of joint meeting of WAS and WSBA in 2012. Paul Lundy will approach Jan Lohman of OSBA

*Discussion of “Queen of the Sun” movie. Could be promoted on WSBA web site and make information available to local associations. Paul Lundy will forward information to local associations in the Seattle, Bellingham and Olympia areas.

*Discussion of National Homebrewers Conference – Cyser: apple cider and honey:

- Obtain one case of cyser for auction at 2012 conference
- Need to have cyser ready for June 2012 conference
- 5 gallon honey donations by Bob Arnold, Paul Hosticka, Eric Olson and Steve Sheppard

Motion to participate by Jerry Tate, second by Shannon Boling, **passed**

Discussion of a pickup truck flat bed with two tool boxes for WSU research staff. Bob Arnold stated that the Inland Empire Beekeepers would match a WSBA donation toward the flat bed. **Motion for WSBA to donate \$900** from the general fund by Bob Arnold, second by Paul Lundy, **passed**

The State of California Treasury Dept. is requiring that non-resident beekeepers pay a tax on their rental fee income that the growers would “with-hold” and transfer to the state.

*Discussion was held about the ABF policy regarding truth in labeling & country of origin labeling. The WSBA should go on record as supporting the ABF effort.

*Legislative activity – Eric Olson:

- The B&O tax exemption designation by the legislature sunsets in 2013. 2012 is the year to make it permanent.

Grigg Apiaries brought to Eric’s attention that the Washington State Department of Revenue, despite the B&O tax exemption for beekeepers, does not recognize

- beekeeping as farming. Eric Olson promoted that “beekeeper as a farmer” be one of the priorities with the legislators in 2012.
- The Farm Bureau will join with WSBA and industry to renew the legislation
- *Information about the issue should be distributed to local associations for action by local beekeepers

Motion that WSBA proceed with this effort by Eric Olson, second by John Timmons, **passed**

*Paul Lundy asked if the group would like him to again distribute his bee loss survey to beekeepers and associations in April 2011. Consensus: Yes

*Paul Lundy discussed putting dues payment and donations links on the WSBA web site.

*He suggested that the Membership Committee discuss ways to make payment of dues easier, including Pay Pal account or other process.

Motion to pay Best Western, Federal Way \$500 deposit for conference facility by Paul Lundy, second by several persons, **passed**

WSBA Survivors Spring Survey

It is that time again to be surveyed to distraction!
 Please take a few moments to contribute to this
 Washington State specific honey bee spring survey.
<http://www.surveymonkey.com/s/5BTBVTc>

Please email this to every Washington State
 beekeeper you know.

Thank you,

Paul Lundy
 President
 Washington State Beekeepers Association

Classified Ads

FOR SALE: A "Steam table" built by Bob
 Gorham of Wapato.

Separates honey and cappings wax as they fall
 on it under the uncapper, refurbished by Bob in
 early 1990's and not used since.

\$500 or best offer. Please call Kenny at Wild
 Harvest Honey at Blodgett, OR (541) 456-2631



*Everything
for the Beekeeper*

Call our branch offices: Jeff in Fresno or John in Chico
for fast courteous service. *Free Full Color Catalog*

PO Box 2837 2765 South Golden State Blvd. Fresno, CA 93745 Phone (559) 495-0230 Fax (559) 495-0232 Toll Free 1-877-432-3268	15 C Valley Court Chico, CA 95973 Phone (530) 893-0921 Fax (530) 893-0922 Toll Free 1-877-332-3268 Website: www.dadant.com
---	--





406-883-2918
 1-800-548-8440
 FAX 406-883-4336
www.westernbee.com



**WESTERN BEE
 SUPPLIES, INC.
 BEE WARE,
 WOOD PELLETS & SHAVINGS**

5 9th Avenue East
 P.O. Box 190
 Polson, Montana 59860

Rick Molenda
 Operations Manager

A Family Tradition in Northern California

Homer Park Italian Queens



Top Quality — All Around Queens
 That Perform Well In All Areas



50 or more \$15.00 each

Shipping extra

Gentle Bees

Early Buildup

High Productivity

Good Acceptance

QUEENS & NUCS
 PH. 530•549•3555



WOOTEN'S GOLDEN QUEENS
 11189 DESCHUTES ROAD
 PALO CEDRO, CA 96073
 FAX 530•549•3624
 Toll Free 888•565•8439




www.wootensgoldenqueens.com

WSU Field Day in Pullman June 24, 25

WSU Honey Bee Field Day Topics

June 24-25, 2011 WSU Campus - Ensminger Pavilion and Apiaries

Friday evening beginning at 6 p.m.:

Honey bee film(s) and wine and cheese social gathering in the Ensminger Livestock Pavilion

Poster set-up (all associations invited to produce a poster about their club activities/bee forage and locales—see note below)

Honey exchange – all participants invited to bring 2 bottles of honey for exchange table (see note below)

Registration and group assignment for Saturday Apiary rounds

Ensminger Pavilion

Saturday - Good morning greetings, registration and coffee – 7:30 – 8:30

8:30 – 8:45 Announcements and Welcome: WSU, WSBA, WSU-CAHNRS Administration

20 minute talks –

- 1) Honey Bees – genetic diversity, breeding efforts
- 2) Honey Bee pests/diseases and legal control options
- 3) Alternative pollinators – Status and long term prospects

Concurrent poster session: local clubs and WSU students

10:00 a.m. - **Apiary /laboratory rounds begin- (participants spend approx. 1 hour at each location)**

(Diagnostic Laboratory)

Pests and Diseases:

Laboratory diagnosis – Erin O'Rourke/Scott

Identifying AFB from scales and brood

Queen pheromone demonstration

Bee Beards (weather permitting)

(Dr. Tim Lawrence)

(Tukey Orchard or Teaching apiary)

Queen rearing:

Stock selection assessment 1 (brood area, pattern),

Preparation of cell-builders (options)

Grafting demonstration/timing,

Mating yard activities

Clipping marking

(Sue Cobey)

(Feed Mill)

Practical Colony Manipulations

Stock selection assessment 2 (freeze-killed hyg. test)

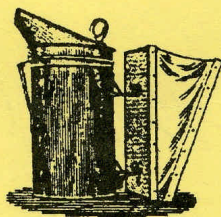
Swarm prevention techniques

Splitting colonies

continued on page 6

**HEITKAMS'
HONEY
BEES**

PAT, RUSSELL & CRAIG HEITKAM
4700 FIRST AVENUE • ORLAND, CA 95963
Bus. 530-865-9562 • Fax 530-865-7839
Email: heitkamsbees@hughes.net



Queens, Bees, Honey & Pollination

WEAVER'S famous QUEENS

and Package Bees

★ Buckfast ★ All-American

★ Beekeeping Supplies

The R. Weaver Apiaries Inc.

16495 C.R. 319, Navasota, TX 77868

Phone 936-825-2333

Fax 936-825-3642

Email: rweaver@rweaver.com

www.rweaver.com

WSU Field Days cont.

Preparing hives for moving
transferring colony from a box hive or feral nest to frame hive
(Beth Kakohnen)

(Hilltop)

Honey Bee behavior – implications for beekeepers

Stock selection assessment 3 – gentleness, brood viability assay
drones and workers
gloveless beekeeping – understanding the threshold concept
(Steve Sheppard)

(TBA)

Practical identification of honey bee diseases, pests, problems

Identifying pests/diseases/problems in the apiary (non-AFB)
Control methods for colony health
Conventional and alternative
(WSBA master beekeepers)

Note for beekeeper participants in 2011:

- 1) **Honey Exchange Table:** Bring two 1 lb jars of your honey for exchange table. Leave two of yours there and take away two of jars of your choice left by other beekeepers
- 2) **Posters:** All local associations are invited to produce a beekeeping/local “apicultural conditions” poster for display at the field day. Can be reclaimed at the end of the field day for use in local fairs, etc. or donated for temporary display in the WSU bee lab until the next field day.
- 3) Lunch will be provided at noon on Saturday at the Livestock Pavilion.
- 4) The weather should be pleasant in Pullman in late June. However, evenings can be quite cool and some layered clothing is a good idea.



Ruhl Bee Supply

Oldest Beekeepers Supply in the NW



17846 SE Royal Drive
Gladstone, Oregon 97037
503.657.5899
www.ruhlbeesupply.com

Tate's Honey Farm

E. 8900 Maringo Drive
Spokane, WA 99212

Rita Tate	Jerry Tate
Beekeeping Supplies	Honey, Comb Honey
Pollination Service	Pollen
Package Bees, Queens	Candle Making
Bulk Bees Wax	Extracting Equipment

509-924-6669 tacon105@icehouse.net

www.tateshoneyfarm.com



Trees 'n Bees, Inc.

Beekeeping Supplies
Queens & Packages
Honey and Gift Items

Saturday 10-4
Monday 9-7 pm
Thursday Noon - 7 pm

253-939-1149
866-627-2857

Lynn & Gordon Elliott
14747 Midway Ave SE
Auburn, WA 98002

treesnbees@live.com

GloryBee Beekeeping



Equipment • Tools • Containers
Books • Gifts • HoneyStix
Royal Jelly • Bee pollen • Propolis

Shop with us online!

Family Owned & Operated
Since 1975

Serving Northwest Beekeepers for over 25 years

www.GloryBeeFoods.com • (800) 456-7923

WSBA Officers & Exec. Committee

President:

Paul Lundy, 7346 NE Crawford Dr., Kingston, WA 98346, 360-297-6743, President@wasba.org

Vice President:

Eric Olson, 93 Camfield Rd., Yakima, WA 98908
509-966-2867 VP@wasba.org

Secretary:

James Bach, P.O. Box 397, Selah, WA 98942-0397
509-573-4245, Secretary@wasba.org

Treasurer:

Paul Hosticka, 517 S. Touchet Rd., Dayton WA 99328
509-382-8939, Treasurer@wasba.org

Area #1a Representative:

Jim Stevens (2012), 360-384-0008, Area1@wasba.org

Area #1b Representative:

Charles "Corky" Luster (2011), Ballard, WA,
206-459-4131, Area1b@wasba.org

Area #2 Representative:

Robert Smith (2011), 15525 Castle SE, Yelm, WA 98597
360-894-2159, Area2@wasba.org

Area #3 Upper Valley Representative:

Brian Johnson (2012), Yakima, WA
509-961-4477, Area3a@wasba.org

Area #3 Lower Valley Representative:

Arlene Massey (2012), 2781 Hornby Rd, Grandview, WA 98930, 509-882-4601

Area #4 Representative:

Dave Sabold (2013), 17 Bean Road Winthrop WA 98862, 509-996-2522, Area4@wasba.org

Area #5 Representative:

Matthew Hutchens (2013), 102 Jackson Grade, Dayton, WA 99328, 509-520-6798, Area5@wasba.org

Area #6 Representative:

Robert Arnold (2013), 42615 N. Division Rd., Deer Park, WA 98006,
509-276-2399, Area6@wasba.org

For more information,
please visit us at:
www.wasba.org

From: David VanderDussen [mailto:davidv@miteaway.com]
Sent: Monday, April 11, 2011 2:19 PM
To: David VanderDussen
Subject: MAQS FAQ's Top-10

Hello everyone,

MAQS has been in the marketplace in Hawaii for 18 month, and now parts of the US for 2 months. There has been a lot of interest and many phone calls. Here is a Top-10 Frequently Asked Questions (FAQ) list for MAQS:

1) Subject: **The paper wrap on the gel strip.**

Q) I remove the outer plastic wrap, should I peel the inner paper wrap off of the of the gel?
A) The paper wrap stays on. It works as a wick to help control the vapour release.

2) Subject: **Examining the colony and then treating.**

Q) The label says to disturb the colony as little as possible at time of application. Can I do a full colony exam and then treat immediately, or should I wait and come back and treat?
A) The bees need to have their affairs in order when treated. When running trials it was found out that the colony assessments were best done 3 days in advance of the application. If the colonies were taken apart, assessed, reassembled and then treated shortly after we saw some absconding. It also increased the risk of queen loss. After an exam it would be best to wait at least until the next day to apply MAQS.

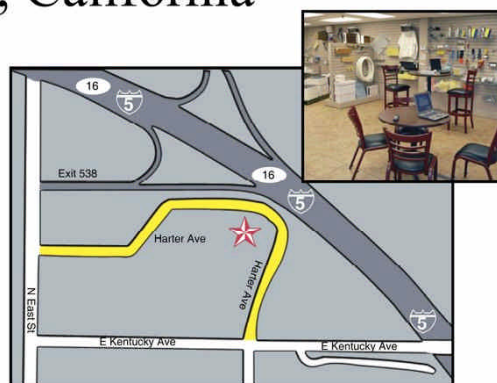
3) Subject: **Treating with honey supers on.**

Q) Can I really treat with honey super on? Why does it not flavour the honey?
A) Formic acid naturally occurs in honey at levels ranging up to over 2,000 parts per million (ppm).

Visit Our Full Service Branch & Warehouse In Woodland, California

- Woodenware
- Hardware
- Clothing
- Containers
- Feeds
- Medications
- Extractors
- High fructose corn syrup

Call to request a
FREE Catalog
866-880-7678



Located near I-80 & I-5 junction

1250 Harter Avenue
Woodland, CA 95776

Mann Lake Ltd.
866-880-7678

The formic acid concentration in hive air during MAQS treatment remains well below 100 ppm, so the levels in the honey do not go outside of naturally occurring levels.

4) Subject: **Screen Bottom Boards**

Q) Should I leave the Screen Bottom open or close it off?

A) There was only one trial run so far with screen bottom boards open, by Randy Oliver

(www.scientificbeekeeping.com). He published the results in the February 2011 issue of American Bee Journal.

There was a 4 to 5 % reduction in efficacy over a solid bottom board, however, both open screen and solid bottom boards saw over 90% drop in mite loads, so it is basically up to the beekeeper.

5) Subject: **Additional entrances, cracks in the equipment.**

Q) Should I close off all entrances except the fully open bottom board entrance?

A) The fully open bottom entrance should be seen as meeting the minimum ventilation need. Having additional entrances does not seem to affect the efficacy of the treatment. Adequate ventilation is critical with this product. For 2 brood chamber colonies some beekeepers slide back the second story to create a temporary full width entrance, and then slide the boxes back square sometime after the first 3 days.

6) Subject: **Colony response - bees bearding on the hive.**

Q) It looks like most of the bees in the hive are bearding out on hive. Is this normal?

A) It is normal for the bees to beard out for the first day, especially under warmer conditions. See the University of Hawaii photos in their report from 2009, found at: <http://www.miteaway.com/V1-wright-varroa.pdf> . There may be an increase in adult bee mortality in the first three days after application. Remember natural loss of bees occurs at about the same rate as egg-laying; with the formic treatment the bees may not be able to clean away the bees as quickly as usual.

7) Subject: **Field bee activity.**

Q) Will the bees continue to forage during the treatment?

A) Yes, the bees continue to forage.

8) Subject: **Impact on brood - reducing dose?**

Q) What is impact on the brood? Can I reduce the dose?

A) Studies have shown that reducing the dose reduces the effectiveness, and may still cause some brood damage.

What we know from trials conducted so far is that MAQS works best by the 2-strip dose. Any brood damage that occurs is quickly made up, the queen is laying throughout the cluster area by Day +7. There are often lots of eggs by Day+4 although they may be as far away from the strips as possible. Any damage is cleaned up by Day +7. The field bees can continue to get pollen through the whole treatment, so there are good protein reserves when all the larva need feeding. The next time that MAQS is used, even if it is months later, the bees somehow know how to cope better.

9) Subject: **Moving bee hives during treatment.**

Q) Can I move the bees during the 7-day treatment period?

A) The bees should not be disturbed during the treatment period.

10) Subject: **Removing the strip residue after treatment.**

Q) The bees chewed up some of the strip but did not remove it all. How do I dispose of the residue?

A) The residue from MAQS will simply compost over time. It can be handled the same way as any other organic yard-waste material.

Obituary for Long Time Members

Robert Randall Zahler Obituary:

Bob embarked on his final passage on March 1, 2011 at the age of 87. Born to Joseph and Peggy Zahler on September 20, 1924 and raised in Mukilteo, WA. After attending Rosehill School and Everett High School, Bob entered Washington State University and joined Sigma Chi at 15 years of age. As a Naval Reservist in college, Bob was pulled into active service during WWII as a marine engineer. After the war Bob joined the Military Sealift Command where he spent a number of years as Chief Engineer of the USNS Albert J. Myer, a cable-laying vessel he grew to love. Bob retired from the MSC after 30 years of service but continued to work various maritime jobs into the 1980s.

Bob kept extremely active after retirement. He was active in the VFW and American Legion and served for years as Post Commander of Monroe's American Legion Post 58. Bob also became a master beekeeper, and was the President of the Washington State Beekeepers Association for over eight years, lecturing internationally on beekeeping practices.

Bob was also passionate about old machinery and was often found working on one of his old trucks or farm tractors. He was a member of the Sky Valley Tractor Club as well as the American Truck Historical Society. Bob enjoyed collecting and restoring trucks.

A variety of health issues slowed Bob down over the last ten years but never stopped his interests or his passion of life. He is survived by his wife of 62 years, Lois; his children, Tony, Robin and Diana; son-in-law Tom; sister-in-law, Doris House; grandchildren Emily, Frank and Nicole; and longtime family friend Al Lee.

By Diana Zahler and Bob's family

Bert Otto
Died Oct 5, 2010

Bert Otto of Yakima, Washington passed away at his home October 5th of heart failure, at the age of 88 years.

Bert was born in Danvers, Illinois and caught his first swarm of bees at age sixteen. So began a lifelong interest in bees and beekeeping.

He served in the US Air Force through World War II (in Australia and the Philippines) and in the Korean War.

In later years, he and his wife Jeanette, whom he married in 1982, traveled extensively to beekeeping conferences, local, national, and even international ones in Switzerland, Belgium, Ireland and Canada. They also traveled extensively for pleasure and their home was filled with bee memorabilia, letters and photos from their many friends all over the world.

Bert and Jeanette have been staunch members of their local and state beekeeping organizations, and of WAS. They were both disappointed to miss the Salem conference this past fall but Bert's health had declined too much to make the trip.

Our sympathy goes out to Jeanette, with our thanks for the many years of support she and Bert afforded our organization and our industry

Reprinted from WAS

2011 WSU/WSBA Beekeeper Field Day Registration

June 24-25, 2011 WSU Pavilion, Diagnostic Lab, and apiaries

Dr. Steve Sheppard and WSBA invite all interested beekeepers to come to Pullman, WA for an informative and fun day of beekeeping activities and socializing! See the next documents for all the details, including activity plan, driving directions, and accommodation resources.

Please send your registration form with your check made out to WSBA to:

Paul Hosticka
Treasurer, WSBA
517 S. Touchet Rd.
Dayton, WA 99328

We look forward to seeing you, so please let us know that you'll be joining us as soon as possible!

Name: _____

Address: _____

City: _____ State _____ Zip _____

Email: _____

(or your phone # if no email, in the event we need to contact you with schedule changes)

Registration Fee: \$ _____ (One person \$20, family \$30)

Total number in your party: _____

Will you be attending the Friday Wine & Cheese Social? (circle one) Yes No

Jerry Tate-Editor
Washington State Beekeepers Association
E. 8900 Maringo Drive
Spokane, WA 99212